



BROKEN ARROW PUBLIC SCHOOLS
POPULAR ANNUAL FINANCIAL REPORT 2021-2022
BROKEN ARROW, OKLAHOMA

COMMUNITY

COMMUNITY



TABLE OF CONTENTS

BY THE NUMBERS	» 4
ACADEMICS	» 6
VANGUARD ACADEMY	» 7
CLASS OF 2022	» 8
DEMOGRAPHICS	» 9
TEACHER OF THE YEAR	» 10
SUPPORT EMPLOYEE OF THE YEAR	» 11
ATHLETICS	» 12
FINE ARTS	» 14
COMMUNITY ENGAGEMENT	» 16
PTA	» 17
FINANCIALS	» 18
SCHOOL SITE DIRECTORY	» 23

GETTING
BACK TO
THE BASICS



LETTER FROM THE SUPERINTENDENT

Broken Arrow has always been my home. I grew up on the south end of Main Street in the Oak Crest addition and lived my entire childhood there on First Place, right behind what is now the Jade Antiques & Vintage Boutique. I graduated from BAHS in 1987, started my teaching and coaching career here 30 years ago, and I am forever grateful for the positive impact this community had on my life.

In my role as superintendent, I feel an extreme sense of responsibility to carry on this district's academic excellence, and to reflect and uphold the values that make this community such a great place to live, work and play. The past few years have been difficult, but we have weathered the storms, and as we take on the new year, there are a number of accomplishments we can look back on with pride. You'll find a few of those successes highlighted in this report.

Your school district now has more than 2,400 incredible employees working in a multitude of different roles: bus drivers, child nutrition workers, custodians, IT techs, plumbers, electricians, administrative assistants and receptionists. But the employees who are at the heart of it all, who are on the front lines impacting student lives on a daily basis, are our outstanding teachers. We work hard to create a culture that attracts and retains the very best employees, and in an ever-changing world, we must think outside the box to overcome the new challenges that lay before us.

The momentum and synergy that we - the school district, the chamber, the city, and the citizens of Broken Arrow - create is beyond exciting. In looking back on the previous year and planning for the new one, I'm excited and optimistic for what lies ahead, because I have no doubt, the best is yet to come.

Sincerely,



Chuck Perry
Superintendent



LETTER FROM THE CHIEF FINANCIAL OFFICER

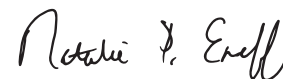
Over the past decade, Oklahoma schools have experienced some of the deepest budget cuts in the country, resulting in some school districts financially struggling to keep up with the daily demands of public education. Add in a global pandemic, and the strain of financial uncertainty could be daunting. As Broken Arrow Public Schools emerges from the pandemic and aims to return to normalcy, continuing to meet challenges head-on with fiscal stewardship, frugal financial practices and careful planning, the goal remains the same—the importance of your child's education.

We are pleased to present Broken Arrow Public Schools' Popular Annual Financial Report for the fiscal year ending June 30, 2022. This report is intended to communicate the district's financial situation in an open and accountable manner. This report is unaudited and information is taken from financial statements and consists mainly of the district's general fund. The general fund is the general operating fund of the district. It is used to account for all financial resources except those required to be accounted for in another fund. The most significant items not reported in the general fund include debt issuance, retirement, building and permanent improvements, and food service.

The district also publishes an Annual Comprehensive Financial Report for the year ending June 30, 2022, which is an audited report and requires greater disclosure than the report you are currently reading. It can be found on our website.

Ultimately, we would like to thank our citizens for their encouragement in creating a report designed to more adequately address their needs as taxpayers, as well as for the opportunity to serve them. Questions, comments and feedback regarding this report are encouraged, so please do not hesitate to contact me at 918-259-5700 or at nseneff@baschools.org.

Sincerely,



Natalie Eneff
Chief Financial Officer



BY THE NUMBERS



37,000

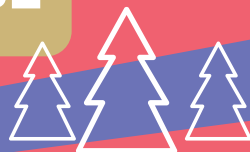
FOLLOWERS ON THE DISTRICT'S SOCIAL MEDIA CHANNELS



SUBSCRIBE

57

OF LIVE STREAM EVENTS



2,704

TREES SAVED BY UTILIZING DIGITAL FLIERS THROUGH PEACHJAR

281

TOTAL VIDEOS PRODUCED WITH 1.2 MILLION VIEWS ACROSS ALL CHANNELS



1,252

COLLEGE CLASSES TAKEN BY EARLY COLLEGE HIGH SCHOOL STUDENTS AND CONCURRENT STUDENTS

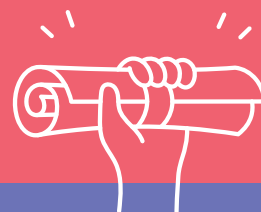
2.1 MILLION

TOTAL VISITS TO BASCHOOLS.ORG



26

TOTAL PODCASTS RECORDED WITH 20,000+ LISTENS/ VIEWS





18,530

TOTAL STUDENT ENROLLMENT

30

SCHOOL SITES

6

NATIONAL MERIT FINALISTS

CHROMEBOOKS ISSUED TO STUDENTS IN GRADES 6-12

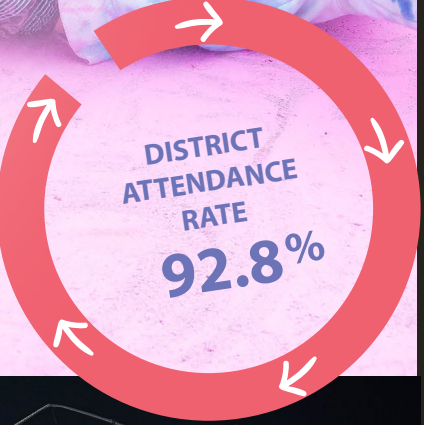
9,382

629

STUDENTS ATTENDING TULSA TECH PROGRAMS

15

LEADERSHIP CLASSES FOR GRADES 9-12



1,180

GRADUATES



2.6 MILLION MEALS SERVED, INCLUDING SUMMER FEEDING



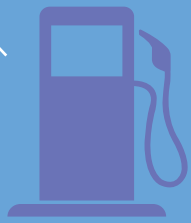
1.1 MILLION MILK CARTONS SERVED

3.5 MILLION SQUARE FEET MAINTAINED DAILY BY CUSTODIAL STAFF



1.9 MILLION ROUTE MILES DRIVEN BY TRANSPORTATION

301,764 GALLONS OF DIESEL FUEL USED FOR BUSES



ACADEMICS



At **Broken Arrow Public Schools**, we cannot think of anything better than the communities we create, both inside and outside the classroom. Our community is rooted in our four core values, where connections are what drive our success. We celebrate our diversity along the way by building a rapport with each other no matter the path of life we walk. Community is about working toward a common goal so that we can accomplish more together than we ever could alone.



As employees, students and families continued to navigate the global pandemic, the 2021-22 school year was one in which provided lessons of togetherness, courage, hope and COMMUNITY. Broken Arrow Public Schools focused on getting back to the basics, while excelling in teaching and learning. Our state-of-the-art classrooms, equipment, curriculum and technology continued to unify our students and staff under a common bond of academic excellence.



OPEN FOR OPPORTUNITIES:

VANGUARD ACADEMY



The Vanguard Academy includes a number of **labs**, a **makerspace**, a **workshop**, a **build shop**, numerous outdoor classrooms and more. In addition, the vocational agriculture center includes **animal pens** and **show barns** for those students pursuing careers in agricultural related occupations.



As part of the second phase of the 2015 bond issue, the district opened its state-of-the-art innovation facility in the fall of 2021 for student inventors in grades 9-12.

141 Full-time Students

129 Part-time Students

“ Vanguard Academy is unlike any other school. We are a community-first campus which allows every student to find their purpose. Our teachers encourage and inspire us to pursue our passions, demonstrate our creativity, expand our knowledge, and build our confidence. - Olivia Salsbury, Vanguard student ”

CLASS OF 2022

1,180

GRADUATES

91%

GRADUATION
RATE

14

CONFETTI
CANNONS AT
GRADUATION

\$6.2 MILLION

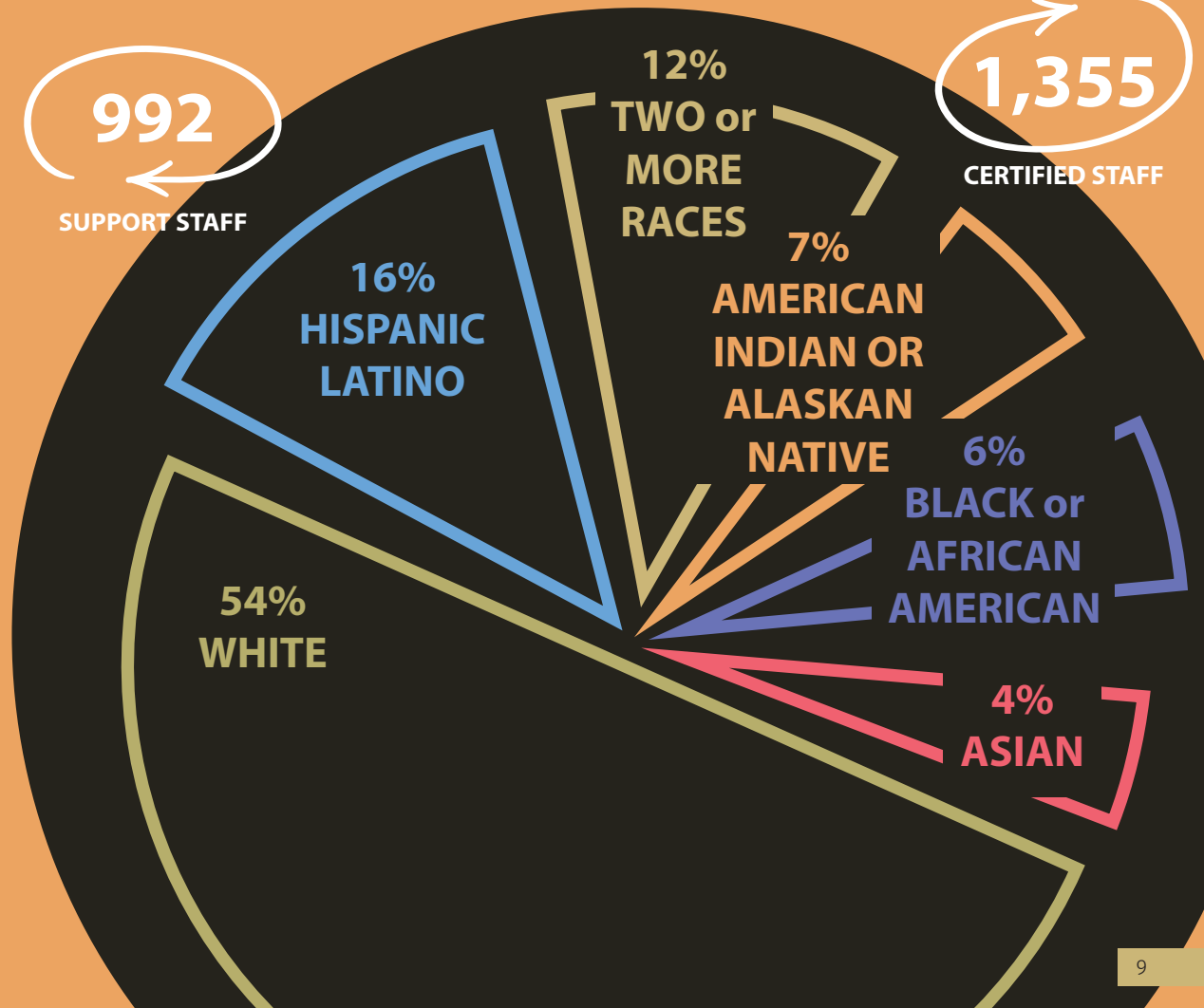
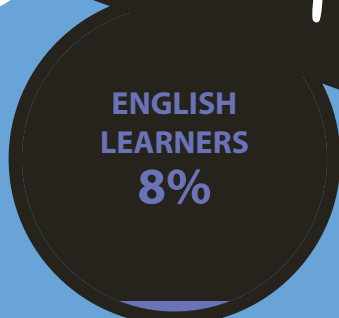
IN SCHOLARSHIPS
REPORTED



DEMOGRAPHICS

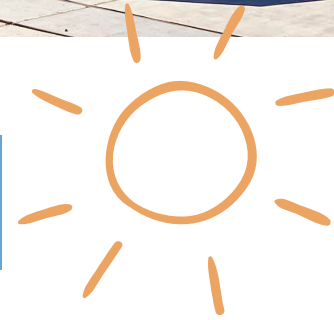


STUDENTS REPRESENT





TEACHER OF THE YEAR



Broken Arrow Public Schools announced Rosewood Elementary teacher Kelsee Arnold as the 2022 District Teacher of the Year during its annual Star Awards Gala in April 2022.

“ I believe every child is capable of achieving greatness and has unique strengths and talents that set them apart from others. - Kelsee Arnold ”

Kelsee Arnold has been an educator for 10 years at Broken Arrow Public Schools. She received her bachelor’s degree in early childhood education from the University of Central Oklahoma, a master’s degree in reading from Northeastern State University and a master’s degree in educational leadership from Oklahoma State University.

awards and has led a number of impactful initiatives.

“While these are cherished and priceless opportunities, my most proud accomplishments are the humble, and often unseen, moments and relationships with my students that I have the privilege of nurturing each day within the walls of my classroom,” she said.

From a young age, she strongly felt the desire to find a path that provided her with an opportunity to make a difference in the world. Throughout her career, she has received several

Her teaching philosophy is that her students’ voice, needs and strengths drive her decision making.



SUPPORT EMPLOYEE

OF THE YEAR

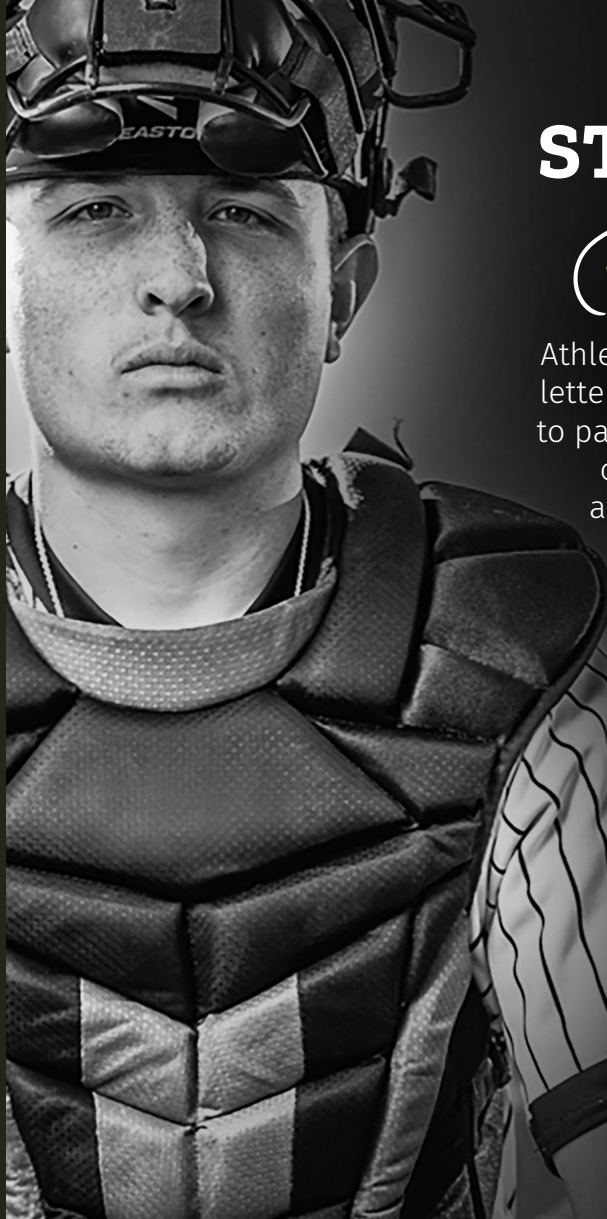
Options Academy Security Guard Derrek Younger

The safety of Broken Arrow students is Derrek Younger's top priority, but his value doesn't stop there. As a musician himself, Younger started a music program at the Options Academy, writing grants to help acquire various musical instruments, and inviting students to learn and play alongside him. Additionally, he organizes the bi-annual graduation ceremonies for the Options Academy, which includes designing the program and helping the student singer of the national anthem.

“**H**e truly impacts the lives of both students and staff on a daily basis, and we are grateful he is part of the BA family.
- Shannon Turner, Options Academy Principal”



ATHLETICS



STRIPES EARNED

43

Athletes signed letters of intent to participate in college athletics

248

Varsity Academic All-Conference Athletes 3.0 + GPA

CHEER

Academic State Championship

19

Top eight finishes

19

Top eight finishes

6

Regional Championships

3

INDIVIDUAL CHAMPIONS

PAYTON HINKLE:

OSSAA Cross Country State Champion

KI'EISHA CATHY:

OSSAA Girls Wrestling State Champion

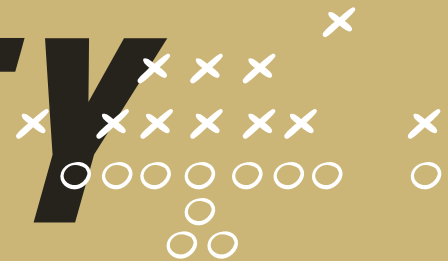
ELI HYNES:

OSSAA Boys Wrestling State Champion

1,314

Students in grades 7-12 participated in athletics

COMMUNITY



2021 **A**thletic
Hall of
Fame



ANDREA AVERY-CHEATHAM: Basketball & Softball

DEREK BLACKBURN: Football

TREY COBB: Baseball

RICK MYERS: Football & Soccer

ZAC VEATCH: Football

FRIENDS OF ATHLETICS

+ **LARRY CLARK:**

The voice of Broken Arrow Tiger Football for more than 20 seasons

+ **LINDA GIPSON:**

BA English teacher for 16 years; Tiger football season ticket holder since 1988

+ **RICHARD MOSBY:**

Involved in Broken Arrow athletics for more than 50 years, starting his career as a teacher, junior high football, wrestling and track coach, bus driver, and part-time events manager

COMMUNITY IS CREATING AN ENVIRONMENT THAT INSPIRES OUR STUDENTS TO ACHIEVE THEIR HIGHEST ACADEMIC, ATHLETIC AND PERSONAL POTENTIAL.



FINE ARTS

CommUNITY is fostering a love of the arts in both our students and teachers, creating well-rounded individuals who excel above and beyond in academia and the post-educational world.



THE PENGUIN PROJECT

Broken Arrow's special education students took to the Broken Arrow Performing Arts Center stage to present "Seussical Kids" as part of the nationwide program called The Penguin Project, which provides an opportunity for children with disabilities to develop creative skills related to theatre arts. In partnership with Clark Youth Theatre in Tulsa, the district brought together special needs students and their families for months of rehearsals, singing, acting, dancing and a full-fledged musical production.

863
TOTAL SHOW
ATTENDANCE

19
PEER
MENTORS

3
SHOWS
PERFORMED

IMMEASURABLE
MEMORIES
AND
LIFE-CHANGING
MOMENTS

15
ARTISTS

13
PENGUIN
PROJECT
COMMUNITY
SPONSORS



the Pride of Broken Arrow



GRAND CHAMPIONS

2022 / 2015 / 2011 / 2006



The Pride of Broken Arrow secured their fourth national title at the Bands of America National Championships with a score of

98.25

the highest score in competition history under the direction of **Darrin Davis** with an intense performance of "The Edge of Eternity."



EXCELLENCE ACHIEVED

MORE THAN

80

FINE ARTS TEACHERS

7,455

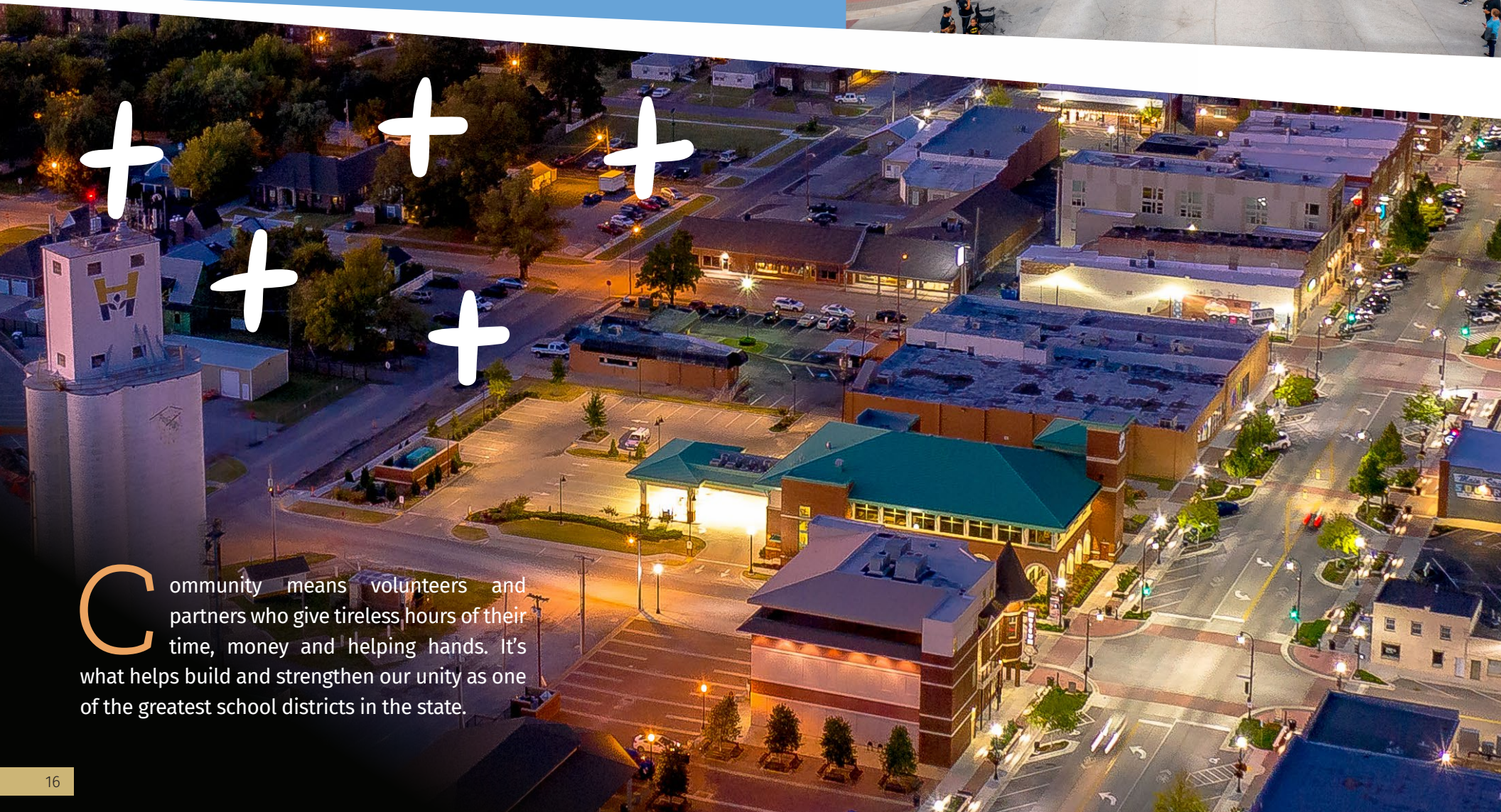
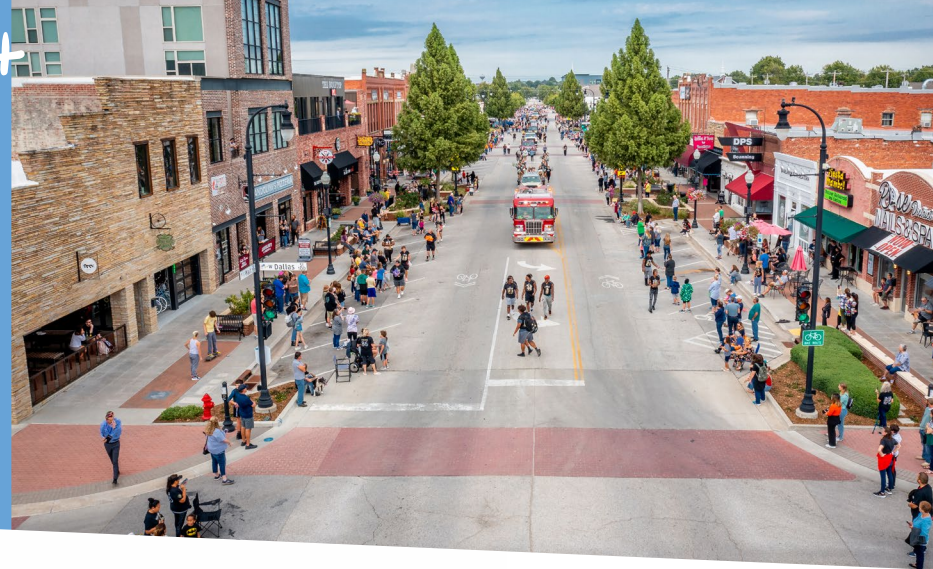
STUDENTS IN 6-12 PARTICIPATED IN FINE ARTS

1,682

PEOPLE ATTENDED THE SPRING MUSICAL "MATILDA" TO WATCH STUDENTS IN GRADES 4-12 PERFORM ON THE BROKEN ARROW PERFORMING ARTS CENTER STAGE



COMMUNITY ENGAGEMENT



Community means volunteers and partners who give tireless hours of their time, money and helping hands. It's what helps build and strengthen our unity as one of the greatest school districts in the state.



CITY OF BA PARTNERSHIP

The Broken Arrow City Council unanimously approved Resolution No. 1443 at one of its regularly scheduled meetings, recognizing the staffing shortage at Broken Arrow Public Schools during the pandemic and declaring the City's support to provide volunteers to the district in its efforts to continue in-person learning.

Finding solutions where needs are and creating ways to help in areas in our city is the right thing to do, and that is what Broken Arrow is all about.

- Broken Arrow Mayor Debra Wimpee

The BAPS Foundation raises money to fund programs that support teachers and students through annual fundraising events and individual or corporate donations. Additional funding comes through investment proceeds from the Foundation's endowment. Since its inception in 1992, the BAPS Foundation has awarded more than **\$750,000** in classroom grants to district teachers. In 2021, the Foundation awarded 62 classroom grants worth **\$50,000** to teachers at **21** school sites across the district.

PTA

At the annual Oklahoma State PTA Awards, Broken Arrow PTA Council was named Oklahoma Council of the Year, and Broken Arrow High School PTSA was named Oklahoma Unit of the Year!

The following units received a membership award for increasing PTA memberships over 100%:

COUNTRY LANE INTERMEDIATE

174%

OAK CREST ELEMENTARY

161%

COUNTRY LANE PRIMARY

159%

VANDEVER ELEMENTARY

110%



BROKEN ARROW PUBLIC SCHOOLS PRIDES ITSELF IN ITS FINANCIAL RESPONSIBILITY

On average, America spends more than \$682 billion a year on public elementary and secondary education in the United States. Three levels of government - federal, state, and local - contribute to education funding. States typically provide a little less than half of all elementary and secondary education funding. Local governments generally contribute about 45% of the total, and the federal government contributes about 8% of all direct expenditures.

The district runs on a \$155 million dollar budget generated from property taxes and state funded revenue, which serves more than 19,500 students and 2,300 employees.

This state aid is distributed through a complex formula that considers the number of students and factors like poverty levels, English Learners, and the need for transportation and special education services.

During the 2021-2022 budgeting process, one of the critical goals was to maintain a well-established fund balance. This fund balance helped combat inflationary items such as insurance, utilities, food, and fuel costs. Additionally, it helped protect the district against uncertain state funding, and helped prepare for the expiration of one-time federal relief funding.



DISTRICT FINANCIALS

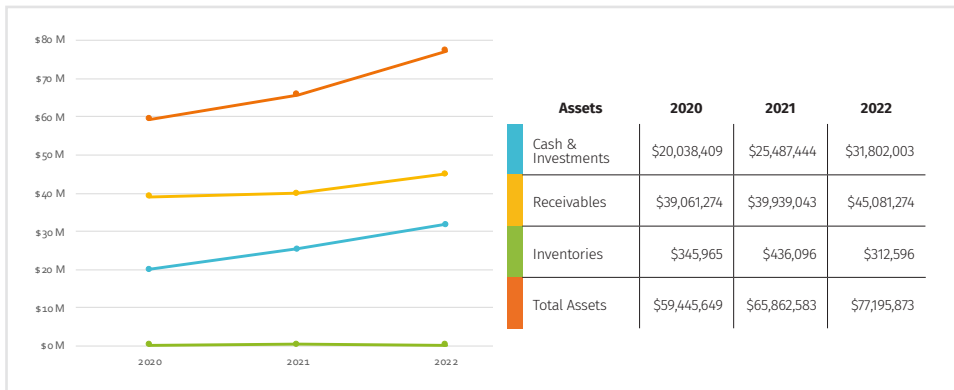
ASSETS OVER LIABILITIES - The Financial Position Statement, known in accounting terms as the balance sheet, reports the assets available to provide services. Liabilities are the amounts for which the district is obligated to pay in the future. The following tables represent the difference between the district's assets and the liabilities it must pay. This difference provides the "net worth" of the district.

ASSETS - Cash is the amount of physical cash held by the district in checking accounts and on hand for purposes of paying expenses. Investments are made up of funds not needed to pay current expenses. The treasurer places these funds in a variety of investment options. This allows the district to earn interest of its cash. Receivables represent the amounts owed to the district on June 30, 2022. Inventories represent the supplies and materials at year-end and are reported as non-spendable fund balance.

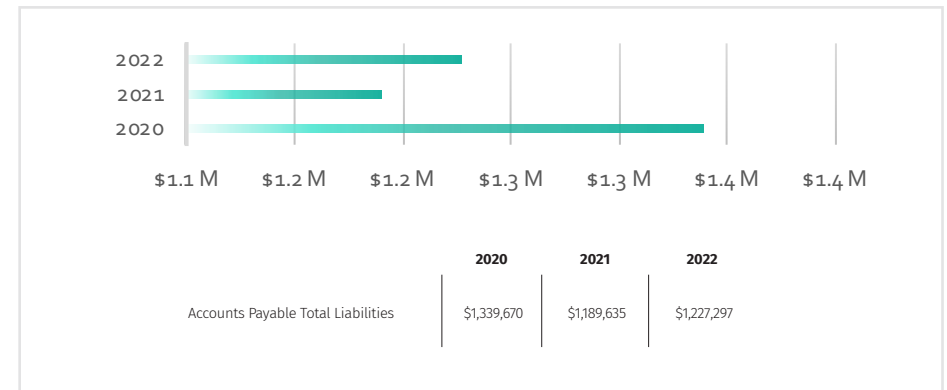
LIABILITIES - Liabilities are amounts the district owes to employees, other government entities or vendors for items or services provided. Payment is expected to be made within months.

DEFERRED INFLOWS/OUTFLOWS - Deferred Inflows of Resources and Deferred Outflows of Resources are neither assets nor liabilities as they relate to the current fiscal year. Unlike current assets and liabilities, these classifications are amounts not recognized as a revenue or an expense until the future period to which the inflows are related.

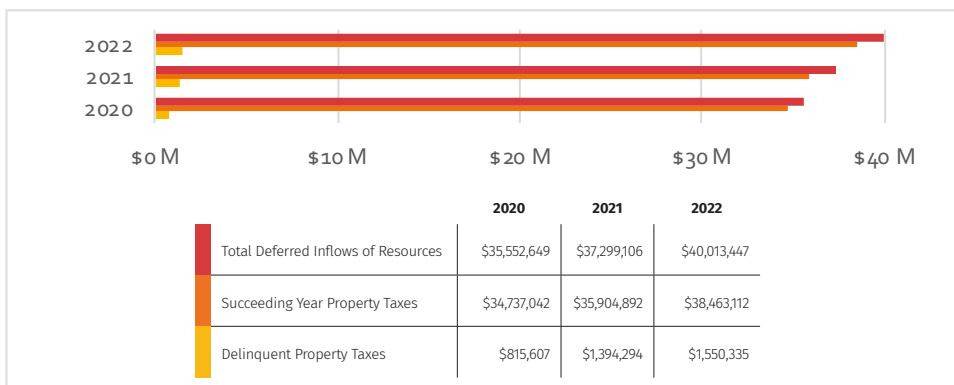
DISTRICT ASSETS



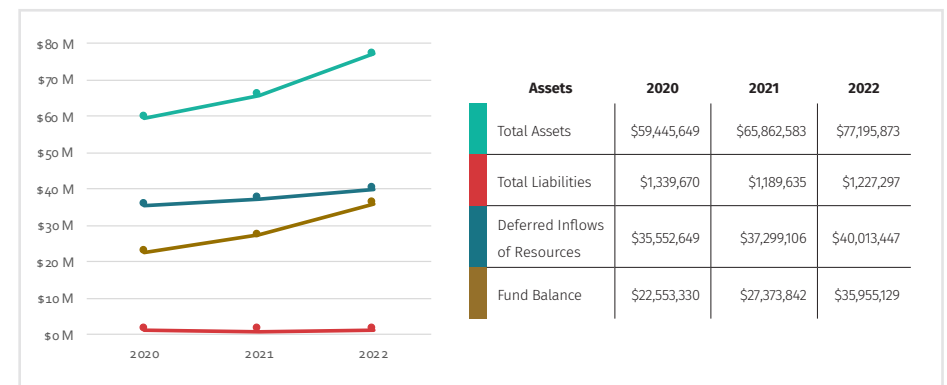
DISTRICT LIABILITIES



DEFERRED INFLOWS OF RESOURCES



DISTRICT TOTALS

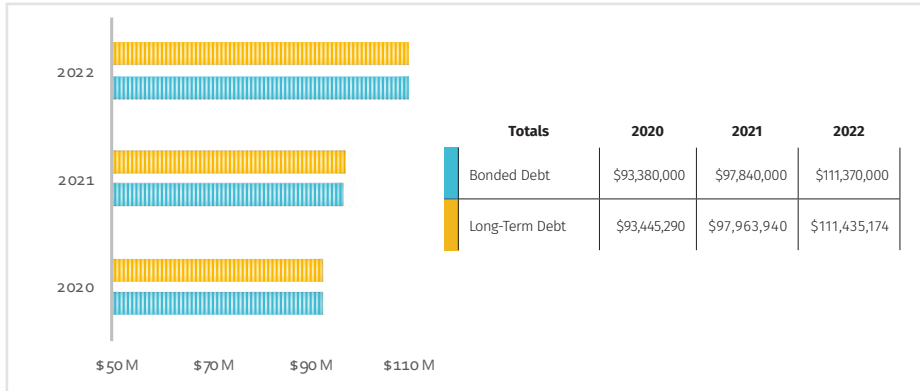


The data provided on this page is from the general fund of the district.

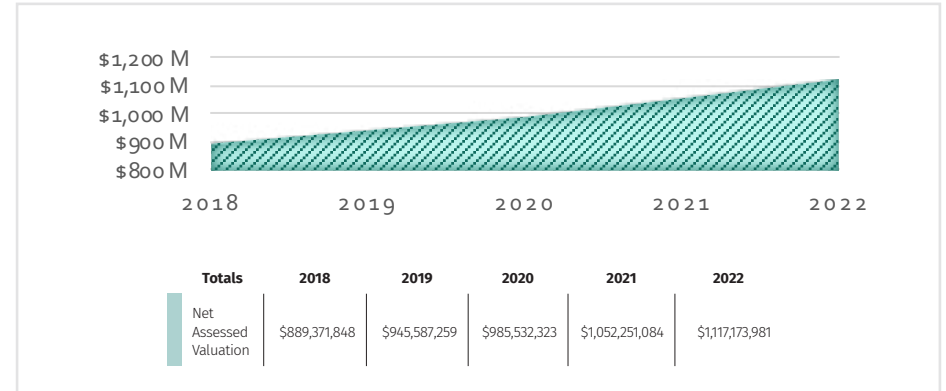
NET ASSESSED VALUATION & LONG-TERM DEBT

Broken Arrow's net assessed valuation has steadily increased over the past 10 years, averaging about a 4 percent growth. This growth mirrors the enrollment growth in the district as it continues to attract more families into the growing community.

BONDED & LONG-TERM DEBT



NET ASSESSED VALUATION

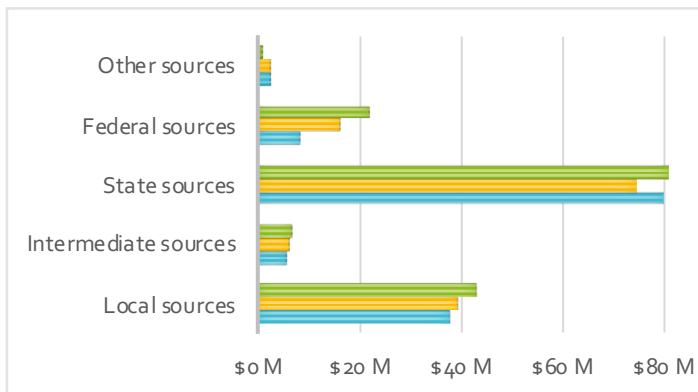


FINANCIAL ACTIVITY STATEMENT

The Statement of Revenues, Expenditures and Changes in Fund Balances provides a summary of resources and services. Other financing sources and uses are not included on this statement. The district's General Fund is presented in the following sections.

WHERE THE MONEY COMES FROM

REVENUE & RESOURCES



	2020	2021	2022
Local sources	\$37,518,771	\$39,490,324	\$42,918,329
Intermediate sources	\$5,519,302	\$6,184,529	\$6,961,786
State sources	\$79,948,144	\$74,698,335	\$80,839,428
Federal sources	\$8,095,997	\$15,991,151	\$21,984,056
Other sources	\$2,462,263	\$2,593,966	\$904,638

ANNUAL REVENUE TOTAL

2020	2021	2022
\$133,544,477	\$138,958,305	\$153,608,237
Non-GAAP Totals		

DEFINITION OF EXPENDITURES

INSTRUCTION - This is the district's largest expenditure category, which relates to the direct instruction of Broken Arrow students.

STUDENT SUPPORT SERVICES - Activities assigned to assess and improve the well-being of students and to supplement the teaching process. These costs cover all guidance services, nursing staff, speech, hearing, occupational therapy, physical therapy and psychological services.

INSTRUCTIONAL STAFF SERVICES - Costs in this category include new curriculum development and evaluation, teaching staff development, school library services, instruction related technology and student assessment.

ADMINISTRATIVE SUPPORT - Costs in this category represent those of the administration and Board of Education's operation of the district. Also included in this category are the services provided by the human resources department, such as the recruitment and placement of teachers. In addition, it includes school building secretarial support and financial services, including payroll, accounts payable and receivable, auditing, budgeting and reporting, and fringe benefits administration.

OPERATIONS & MAINTENANCE - Costs in this category cover salaries and benefits for custodians and property management staff. This also includes costs for natural gas, electricity, water, grounds, telephone, computer network supplies/repairs, copier services and district security.

STUDENT TRANSPORTATION - Costs in this category cover salaries, benefits, supplies, fuels and equipment for the transportation department, including bus drivers and vehicle maintenance.

CHILD NUTRITION OPERATIONS - This category covers indirect costs associated with child nutrition operation, including incurred unemployment costs, workers compensation, and program support from financial services.

COMMUNITY SERVICES OPERATIONS - Costs covering salaries, benefits and supplies for programs not directly related to student education. These enrichment opportunities include the district's before and after care program, also know as B&A Connections, and community relations program.

OTHER - Costs covering insurance premiums, claim payments and safety supplies.

WHERE THE MONEY GOES

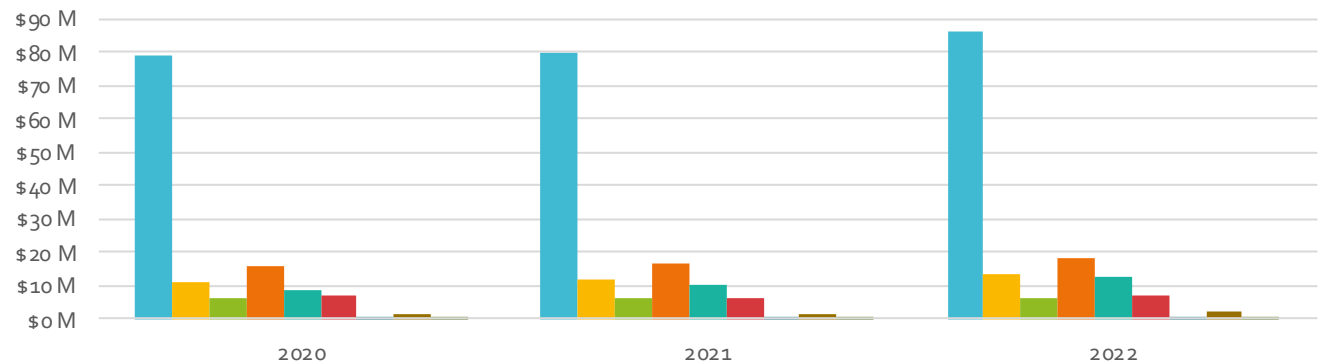
EXPENDITURES & SERVICES

	2020	2021	2022
Instruction	\$78,986,747	\$80,188,666	\$86,227,445
Students	\$10,798,725	\$11,873,633	\$13,738,265
Instructional Staff	\$6,057,988	\$6,013,268	\$6,518,479
Administration	\$15,915,551	\$16,889,937	\$18,367,539
Operations & Maintenance	\$8,989,310	\$10,238,965	\$12,890,396
Student Transportation	\$6,723,871	\$6,143,372	\$7,246,014
Child Nutrition	\$61,424	\$37,917	\$11,050
Community Service Operations	\$1,139,232	\$1,505,499	\$1,891,078
Other	\$572,896	\$467,978	\$441,074

ANNUAL EXPENDITURE TOTALS

2020	2021	2022
\$129,245,744	\$133,359,235	\$147,331,340

Non-GAAP Totals





SCHOOL SITE DIRECTORY

BROKEN ARROW HIGH SCHOOL
1901 E. Albany St.
918-259-4700

EARLY COLLEGE HIGH SCHOOL
3100 New Orleans St.
918-449-6184

VANGUARD ACADEMY
3000 E. Albany St.
918-259-4320

FRESHMAN ACADEMY
301 W. New Orleans
918-259-4330

BA OPTIONS ACADEMY
412 S. 9th St.
918-259-4600

CENTENNIAL MIDDLE SCHOOL
225 E. Omaha
918-259-4340

CHILDERS MIDDLE SCHOOL
301 E. Tucson
918-259-4350

OLIVER MIDDLE SCHOOL
3100 W. New Orleans
918-259-4590

ONETA RIDGE MIDDLE SCHOOL
6800 E. Quincy Pl.
918-259-4360

SEQUOYAH MIDDLE SCHOOL
2701 S. Elm Pl.
918-259-4370

ARROWHEAD ELEMENTARY
915 W. Norman
918-259-4390

ASPEN CREEK ELEMENTARY
2800 W. Florence
918-259-4410

COUNTRY LANE PRIMARY
301 E. Omaha
918-259-4400

COUNTRY LANE INTERMEDIATE
251 E. Omaha
918-449-5600

CREEKWOOD ELEMENTARY
1301 E. Albany St.
918-259-4500

HIGHLAND PARK ELEMENTARY
7200 E. Quincy Pl.
918-505-5930

LEISURE PARK ELEMENTARY
4300 S. Juniper Pl.
918-259-4420

LIBERTY ELEMENTARY
4300 S. 209th E. Avenue
918-259-4470

LYNN WOOD ELEMENTARY
1600 W. Quincy Ave.
918-259-4430

OAK CREST ELEMENTARY
405 E. Richmond
918-259-4450

RHOADES ELEMENTARY
320 E. Midway
918-259-4440

ROSEWOOD ELEMENTARY
4300 E. Gary St.
918-893-6540

SPRING CREEK ELEMENTARY
6801 S. Third St.
918-259-4480

TIMBER RIDGE ELEMENTARY
3500 E. Kenosha St.
918-505-5260

VANDEVER ELEMENTARY
2200 S. Lions Ave.
918-259-4490

WOLF CREEK ELEMENTARY
3000 W. New Orleans
918-259-4510

**ARROW SPRINGS
EARLY CHILDHOOD CENTER**
101 W. Twin Oaks St.
918-259-4380

**ASPEN CREEK
EARLY CHILDHOOD CENTER**
2700 W. Florence
918-505-5290

**CREEKWOOD
EARLY CHILDHOOD CENTER**
1351 E. Albany St.
918-505-5280

**PARK LANE
EARLY CHILDHOOD CENTER**
7700 S. Shelby Lane
918-806-8665

VIRTUAL ACADEMY
412 S. 9th St.
918-505-5270





BROKEN ARROW
PUBLIC SCHOOLS



There will be no discrimination in the District because of race, color, sex, pregnancy, gender, gender expression or identity, national origin, religion, disability, veteran status, sexual orientation, age, or genetic information in its programs, services, activities and employment. The district also provides equal access to the Boy Scouts of America and other designated youth groups. Broken Arrow Public Schools will take all necessary steps to ensure that each school and work place in the District is free from unlawful discrimination or harassment. The following people within the District have been designated to handle inquiries regarding the District's non-discrimination policies, issues and concerns: For all student issues related to Title VI of the Civil Rights Act of 1964, as amended (questions or complaints based on race, color, and national origin), the Deputy Superintendent should be contacted at 918-259-5700 or at 701 South Main Street, Broken Arrow, OK 74012; For all student issues related to Title II of the Americans with Disabilities Act of 1990, Section 504 of the Rehabilitation Act of 1973, and the Individuals with Disabilities Education Act of 2004 (IDEA) (for questions or complaints based on disability), the Executive Director of Special Services should be contacted at 918-259-5700 or at 701 South Main Street, Broken Arrow, OK 74012; For all student issues related to Title IX, of the Education Amendments of 1972 (for questions or complaints based on sex, pregnancy, gender, gender expression or identity), the Assistant Superintendent should be contacted at 918-259-7722 or at 701 South Main Street, Broken Arrow, OK 74012; For issues related to accessibility to facilities, services and activities pursuant to the Americans with Disabilities Act, the Associate Superintendent should be contacted at 918-259-5728 or at 701 South Main Street, Broken Arrow, OK 74012; For all non-student and/or employment related issues (including questions or complaints based on age), or for any individual who has experienced some other form of discrimination, including discrimination not listed above, the Chief Human Resources Officer should be contacted at 918-259-7724 or at 701 South Main Street, Broken Arrow, OK 74012. Inquiries concerning non-discrimination can also be made to, and outside assistance obtained from, the United States Department of Education's Office for Civil Rights. The contact information for the Kansas City Enforcement Office is included below: Office of Civil Rights, U.S. Department of Education One Petticoat Lane 1010 Walnut Street, Suite 320 Kansas City, MO 64106 Telephone: (816) 268-0550 TTY: (877) 521-2172 Facsimile: (816) 823-1404 Email: OCR.KansasCity@ed.gov